

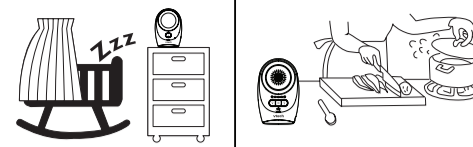
Congratulations

DM1111

Digital Audio Monitor

on purchasing your new VTech product. Before using this product, please read **Important safety instructions**.

This manual has all the feature operations and troubleshooting necessary to install and operate your new VTech product. Please review this manual thoroughly to ensure proper installation and operation of this innovative and feature rich VTech product.

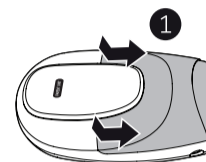


NOTES

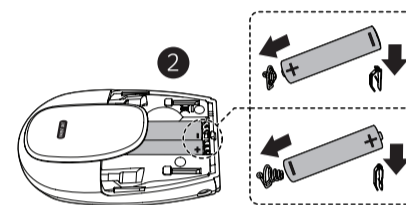
- Use only the rechargeable batteries provided (1.2V AAA 400mAh Ni-MH). If you use other kind of batteries, the performance of the baby monitor varies.
- Do not mix old and new batteries. Do not mix alkaline, standard (Carbon-Zinc) or rechargeable (Ni-Cad, Ni-Mh, etc) batteries.
- While you insert the batteries, make sure the polarities are correct.
- When the batteries are installed, the parent unit turns on.
- Replace the batteries when the light flashes on the parent unit, or you hear two beeps every 10 minutes.

Install the batteries as shown below.

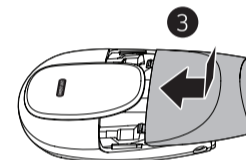
- Press down on the battery compartment cover to slide it out.



- Insert the rechargeable batteries into the battery compartment, according to the polarity indications (+) and (-).



- Slide the battery compartment cover until it clicks into place.



Replace the battery

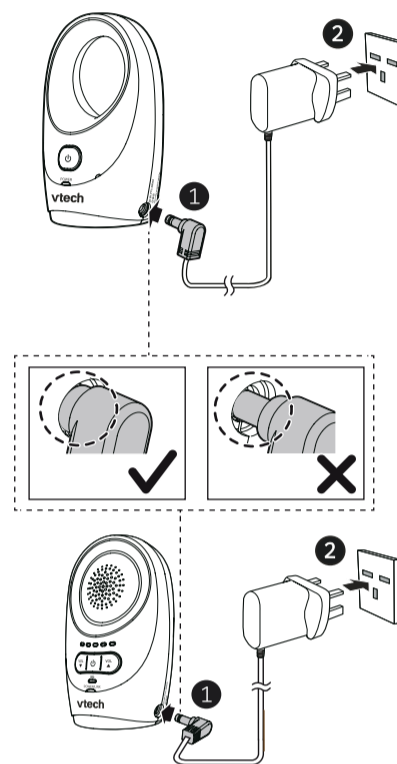
To replace the two batteries (1.2V AAA 400mAh Ni-MH), slide open the battery compartment cover, and then take out the batteries. Follow the previous steps to install the new batteries.

Connect

NOTES

- Use only the power adaptors supplied with this product.
- The power adaptors are intended to be correctly oriented in a vertical or floor mount position. The prongs are not designed to hold the plug in place if they are plugged into a ceiling, under-the-table or cabinet outlet.
- Make sure the parent unit, the baby unit and the power adaptor cords are out of reach of children.
- Both the baby unit and the parent unit are on once connected to the power supply.

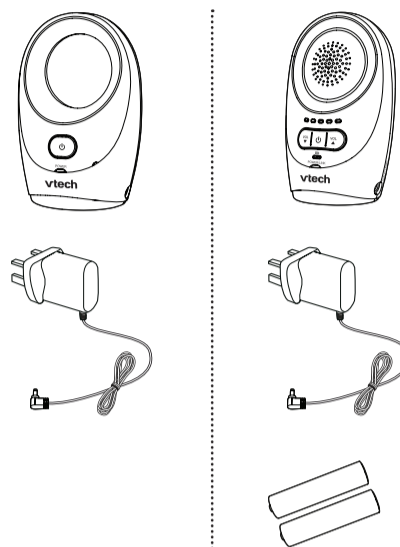
Connect the baby monitor



vtech®

User's manual

What's in the box



Install batteries for temporary use

We recommend that you use the power adapter power up the parent unit for normal use. If you want to move around the house with the parent unit, install the rechargeable batteries provided for temporary use.

- Make sure your baby unit and parent unit are on.
- Speak towards the microphone of the baby unit. You will hear the sound at the parent unit, and see the visual sound indicators light up.

NOTE

- When the **POWER/LINK** LED light flashes, move the parent unit closer to the baby unit (observe the minimum distance of 6.5 feet / 2 metres). You can also check if the baby monitor is connected to a live power socket and switched on.

TIP

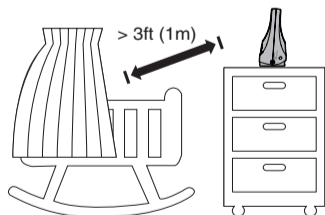
- Increase the speaker volume of the parent unit if you cannot hear the sounds transmitted from the baby unit.

Positioning the baby monitor

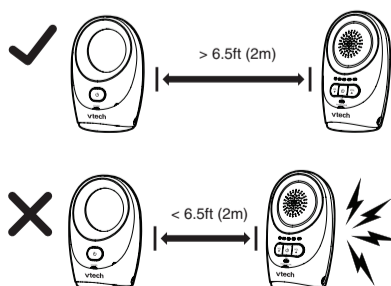
CAUTION

- Keep the baby unit out of the reach of your baby. Never place or mount the baby unit inside the baby's cot or playpen.

- Place the baby unit more than 3 feet (1 metre) away from your baby.



- Place the parent unit more than 6.5 feet (2 metres) away from the baby unit.



CAUTION

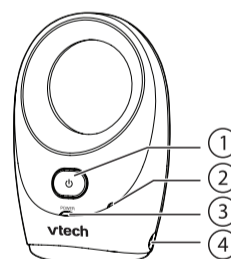
- The default volume of your parent unit is **Level 3**, and the maximum volume is **level 5**. If you experience high-pitched screeching noise from your baby monitor while positioning:
 - Make sure your baby unit and parent unit are more than 6.5 feet (2 metres) apart, OR
 - Turn down the volume of your parent unit.

Operating range

The operating range of the baby monitor is up to 1,500 feet (450 metres) outdoors or 160 feet (50 metres) indoors. The actual operating range may vary depending on the environmental conditions and other interferences such as walls, doors and other obstructions.

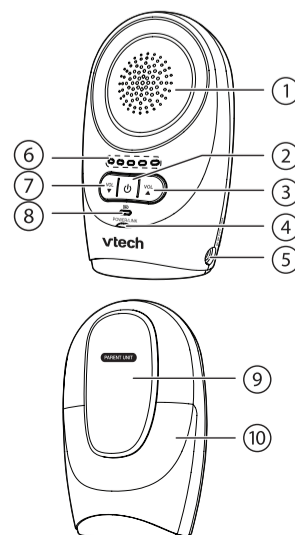
Overview

Baby unit overview



1	(On/off) Press and hold to turn on or off the baby unit.
2	Microphone
3	POWER light
4	Power jack

Parent unit overview



1	Speaker
2	(On/off) Press and hold to turn on or off the parent unit.
3	(Volume up) • Press to increase the speaker volume.
4	POWER / LINK light
5	Power jack
6	Visual sound indicator • Indicate the sound level detected by the baby unit or show the volume level during speaker volume setting.
7	(Volume down) • Press to decrease the speaker volume. • Press repeatedly until the volume reaches the minimum to mute the parent unit.
8	(Low battery light)
9	Belt clip
10	Battery compartment cover

Baby unit light

	POWER light • Lights off when the baby unit is off. • Lights on in green when the baby unit is on.
--	---

Parent unit lights

	POWER / LINK light • Lights off when the parent unit is off. • Lights on in green when the parent unit is on and linked to the baby unit. • Flashes in green when there is no link between the baby unit and parent unit, or when the parent unit is out of range from the baby unit.
--	---

	Visual sound indicator The visual sound indicator has two functions. One is to show the sound level detected by the baby unit. The other one is to show the volume level during speaker volume setting.
	Sound level detected by the baby unit • One to three green lights indicate a moderate sound level detected by the baby unit. • Additional red lights indicate a higher sound level detected by the baby unit (e.g. baby crying loudly).
	Speaker volume level • One to three green lights indicate Level 1 to Level 3 of the speaker volume setting. • Additional red lights indicate Level 4 to Level 5 of the speaker volume setting.
	Flashes in red when the battery is low.

Parent unit alert tones

Low battery tone	• Beeps twice every 10 minutes when the battery is low.
Out of range tone	• Beeps three times every 30 seconds when there is no link between the baby unit and parent unit, or when the parent unit is out of range from the baby unit.

NOTES

- Make sure the **POWER / LINK** light is on after the power plug is fully inserted into the power jack of the parent unit.
- Make sure the baby unit is on. If the parent unit is not linked to the baby unit, the **POWER / LINK** light on the parent unit will flash. Move the parent unit closer to the baby unit (but not less than 6.5 feet / 2 metres).
- Make sure the **POWER** light is on after the power plug is fully inserted into the power jack of the baby unit.

Charge the parent unit battery

When you have connected the parent unit and installed its battery for the first time or after power outage, the parent unit powers on automatically.

NOTES

- The parent unit battery is fully charged after 16 hours of continuous charging.
- It takes longer to charge the battery when the parent unit is turned on. To shorten the charging time, turn the parent unit off while charging.
- The standby time varies depending on the volume level you set, your actual use and the age of battery.

Before use

NOTE

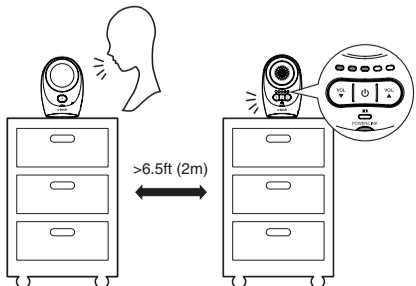
- This baby monitor is intended as an aid. It is not a substitute for proper adult supervision, and should not be used as such.

Test your baby monitor

You may test the baby monitor before initial use, and at regular times thereafter.

CAUTION

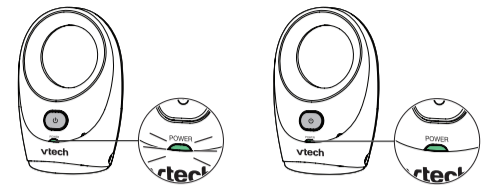
- For hearing protection, make sure the parent unit is more than 6.5 feet (2 metres) away from the baby unit. If you hear any high-pitched noise, move the parent unit further until the noise stops. You can also press on the parent unit to lower or mute the noise.



Using the baby monitor

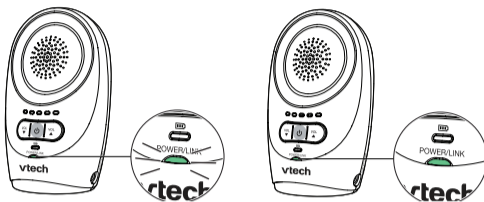
Power on or off the baby unit

- Press . The **POWER** light turns on.
- Press and hold until the **POWER** light turns off.



Power on or off the parent unit

- Press and hold until the **POWER / LINK** light turns on.
- Press and hold until the **POWER / LINK** light turns off.



Adjust speaker volume

The speaker volume is preset to **Level 3** on the parent unit. You can adjust to your preferred sound level.

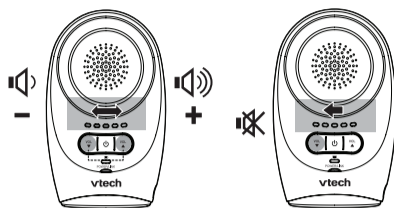
- Press to decrease the volume, and to increase the volume.

NOTE

- If you continue to press or when the volume reaches the minimum or maximum setting, the parent unit will beep twice.

To mute the speaker volume:

- Press repeatedly until the volume reaches the minimum.



NOTES

- When the parent unit is in mute, the visual sound indicator will still indicate the sound detected from the baby unit.
- To unmute, press repeatedly until it reaches your desired volume.

General product care

To keep this product working well and looking good, follow these guidelines:

- Avoid putting it near heating appliances and devices that generate electrical noise (for example, motors or fluorescent lamps).
- DO NOT expose it to direct sunlight or moisture.
- Avoid dropping the product or treating it roughly.
- Clean with a soft cloth.
- DO NOT immerse the parent unit and the baby unit in water and do not clean them under the tap.
- DO NOT use cleaning spray or liquid cleaners.
- Make sure the baby unit and parent unit are dry before you connect them to the mains again.

Storage

When you are not going to use the baby monitor for some time, remove the 2 rechargeable batteries (Ni-Mh Cell 1.2V; AAA; 400mAh) from the parent unit. Store the parent unit, the baby unit and the adaptors (DC 6V; 450mA) in a cool and dry place.

Operating range

The baby unit and the parent unit can communicate over only a certain distance - which can vary with the locations of the baby unit, the parent unit, the weather, and the layout of your home. When the parent unit is out of range, it will beep three times every 30 seconds and enter searching mode. To improve reception, move closer to the baby unit (but not less than 6.5 feet / 2 metres).

Frequently asked questions

Below are the questions most frequently asked about the baby monitor.

Why doesn't the POWER light on the baby unit turn on when I switch on the units?	Perhaps the baby unit is not connected to the power supply. Connect the baby unit to power supply. The baby unit turns on.
Why doesn't the POWER / LINK light on the parent unit turn on when I switch on the units?	Perhaps the battery of the parent unit is empty and the parent unit is not connected to power supply. Make sure you installed the two rechargeable batteries provided, and then connect the parent unit to power supply to charge the battery. The parent unit turns on and establishes connection with the baby unit.
Why does the baby monitor not respond normally?	Try the following (in the order listed) for common cure: <ol style="list-style-type: none"> 1. Make sure that both baby unit and parent unit are on. Disconnect the power from the baby unit and the parent unit. 2. Remove the batteries from the parent unit. 3. Connect the baby unit to the power supply again. The baby unit turns on. 4. Connect the parent unit to the power supply again. Install the two rechargeable batteries provided. The parent unit turns on. 5. Wait for the parent unit to synchronize with the baby unit. Allow up to one minute for this to take place. 6. Press or to adjust the speaker volume on the parent unit.
Why does the baby monitor produce a high-pitched noise?	The units may be too close to each other. Make sure the parent unit and the baby unit at least 6.5 feet / 2 metres away from each other.

Why don't I hear a sound/ Why can't I hear my baby cry?	Make sure that both baby unit and parent unit are on. If you see the visual sound indicators light up, but there is no sound, then you may have muted the volume or set it to a lower level. Adjust the volume to a higher level. If the visual sound indicators do not light up, and you cannot hear any sound, it is because the baby sound is too low for the baby unit to detect. This is normal. Place the baby unit at least 6.5 feet / 2 metres away from your baby.
Why does the parent unit beep?	The parent unit beeps three times every 30 seconds when the baby unit is out of range. Move the parent unit closer to the baby unit (but not less than 6.5 feet / 2 metres). If the parent unit is powered by batteries, the parent unit beeps twice every 10 minutes and the light flashes in red when the battery is low. Connect the parent unit to power supply to charge the battery.
Why does the parent unit light flash?	If the parent unit is powered by batteries, the parent unit beeps twice every 10 minutes and the light flashes in red when the battery is low. Connect the parent unit to the power supply to charge the battery.
Why can't I establish a connection? Why is the connection lost every now and then? Why are there sound interruptions?	The baby unit may be out of range. Move the parent unit closer to the baby unit (but not less than 6.5 feet / 2 metres). Other electronic products may cause interference with your baby monitor. Try installing your baby monitor as far away from these electronic devices as possible.

Important safety instructions

The applied nameplate is located at the bottom of the baby unit's base.

When using your equipment, basic safety precautions should always be followed to reduce the risk of fire, electric shock and injury, including the following:

- Follow all warnings and instructions marked on the product.
- Adult setup is required.
- CAUTION:** Do not install the baby unit at a height above 2 metres.
- This product is intended as an aid. It is not a substitute for responsible and proper adult supervision and should not be used as such.
- This product is not intended for use as a medical monitor.
- Do not use this product near water. For example, do not use it next to a bath tub, wash bowl, kitchen sink, laundry tub or swimming pool, or in a wet basement or shower.
- CAUTION:** Use only the battery provided. There may be a risk of explosion if a wrong type of battery is used for the parent unit. The battery cannot be subjected to high or low extreme temperature and low air pressure at high altitude during use, storage or transportation. Disposal of battery into fire or a hot oven, or mechanically crushing or cutting or the battery can result in an explosion. Leaving the battery in an extremely high temperature surrounding environment can result in an explosion or the leakage of flammable liquid of gas. Battery subjected to extremely low air pressure may result in an explosion or the leakage of flammable liquid or gas. Dispose of used batteries according to the instructions.
- Use only the adapters included with this product. Incorrect adapter polarity or voltage can seriously damage the product.
- Use only adaptors and battery listed below.

Use only the provided external power supply:
Ten Pao Industrial Co.,Ltd.
Model : S003ATV0600045 (EU),
S003ATB0600045 (UK).

Use only the supplied batteries:
2 x 1.2V AAA size 400mAh NiMH.
Corun - KH-AAA400

- The power adapters are intended to be correctly oriented in a vertical or floor mount position. The prongs are not designed to hold the plug in place if it is plugged into a ceiling, under-the-table or cabinet outlet.
- For pluggable equipment, the socket-outlet shall be installed near the equipment and shall be easily accessible.
- Unplug this product from the wall outlet before cleaning. Do not use liquid or aerosol cleaners. Use a damp cloth for cleaning.
- Do not cut off the power adapters to replace them with other plugs, as this causes a hazardous situation.
- Do not allow anything to rest on the power cords. Do not install this product where the cords may be walked on or crimped.
- This product should be operated only from the type of power source indicated on the marking label. If

you are not sure of the type of power supply in your home, consult your dealer or local power company.

- Do not overload wall outlets or use an extension cord.
- Do not place this product on an unstable table, shelf, stand or other unstable surfaces.
- This product should not be placed in any area where proper ventilation is not provided. Slots and openings in the back or bottom of this product are provided for ventilation. To protect them from overheating, these openings must not be blocked by placing the product on a soft surface such as a bed, sofa or rug. This product should never be placed near or over a radiator or heat register.
- Never push objects of any kind into this product through the slots because they may touch dangerous voltage points or create a short circuit. Never spill liquid of any kind on the product.
- To reduce the risk of electric shock, do not disassemble this product, but take it to an authorized service facility. Opening or removing parts of the product other than specified access doors may expose you to dangerous voltages or other risks. Incorrect reassembling can cause electric shock when the product is subsequently used.
- You should test the sound reception every time you turn on the units or move one of the components.
- Periodically examine all components for damage.
- There is a very low risk of privacy loss when using certain electronic devices, such as baby monitors, cordless telephones, etc. To protect your privacy, make sure the product has never been used before purchase, reset the baby monitor periodically by powering off and then powering on the units, and power off the baby monitor if you will not use it for some time.
- Children should be supervised to ensure that they do not play with the product.
- The product is not intended for use by persons (including children) with reduced physical, sensory or mental capabilities, or lack of experience and knowledge, unless they have been given supervision or instruction concerning use of the appliance by a person responsible for their safety.

SAVE THESE INSTRUCTIONS

Cautions

- Use and store the product at a temperature between 0°C and 40°C.
- Do not expose the product to extreme cold, heat or direct sunlight. Do not put the product close to a heating source.
- Batteries should not be exposed to excessive heat such as bright sunshine or fire.
- Make sure the baby unit(s) and the adapter cord(s) are always out of reach of the baby, at least 1 metre away from the baby or cot, to avoid a possible strangulation hazard.
- Never place the baby unit(s) inside the baby's cot or playpen. Never cover the baby unit(s) or parent unit with anything such as a towel or a blanket.
- Other electronic products may cause interference with your baby monitor. Try installing your baby monitor as far away from these electronic devices as possible: wireless routers, radios, cellular telephones, intercoms, room monitors, televisions, personal computers, kitchen appliances and cordless telephones.

Customer service and product warranty

IMPORTANT

Please retain this booklet with your sales receipt as proof of the date of purchase.

Customer Service

Please call our Consumer Services Department on 03306 780149 (from UK) or +44 3306 780149 (outside UK) and a service representative will be happy to help you.

ONE YEAR
PRODUCT WARRANTY

PRODUCT WARRANTY

Thank you for choosing this quality product from VTech. We hope it will bring many hours of entertainment, imaginative play and learning.

- The product detailed above is covered by a one year warranty from the date of purchase, against any defects in materials or workmanship.
- The product may be returned to the place of purchase. Alternatively the product can be returned to VTech Electronics Europe plc (see address below), with proof of purchase, without proof of purchase no replacement will be provided.
- VTech Electronics Europe plc will examine the product and if it is found to be defective due to faulty materials or workmanship, will replace the product at their discretion.
- If the product covered by this warranty is damaged due to misuse, modification or unauthorised repair, or because of faulty batteries, battery discharge or incorrect electrical connections, then this warranty becomes void.
- This warranty is personal to the original purchaser and is not transferable.
- Breakages to the LCD screen are not covered by the warranty.
- Returns to VTech Electronics Europe plc should include a cheque or postal order for £1.50 towards the cost of return postage and packaging.
- Products returned to VTech Electronics Europe plc, should be addressed as follows and packed carefully to avoid damage in transit (Please do not include batteries or adaptor). Please include details of the fault together with your name and address.
- To keep an online record of your warranty, please register your product online at www.vtech.co.uk/warranty

VTech Electronics EU PLC, c/o XPO Logistics, Warehouse 350, Cat & Fiddle Lane, West Hallam, DE7 6HE.
THIS WARRANTY IS OFFERED AS AN EXTRA BENEFIT AND DOES NOT AFFECT CONSUMERS' STATUTORY RIGHTS.

This warranty is valid for the UK and Eire only. For products purchased outside the UK and Eire, please contact your local distributor or place of purchase.

Technical specifications

Frequency control	Crystal controlled PLL synthesizer
Transmit frequency	Baby unit: 1881 - 1897 MHz Parent unit: 1881 - 1897 MHz Maximum power used by the transmitter: 0.25W (250mW)
Channels	10
Nominal effective range	Actual operating range may vary according to environmental conditions at the time of use.
Power requirements	Baby unit adaptor: Output: DC 6V @ 450mA Parent unit adaptor: Output: DC 6V @ 450mA Parent unit battery: 1.2V AAA 400mAh Ni-MH (2 Cells)

Manufacturer: VTech Telecommunications Ltd.

23/F., Tai Ping Industrial Centre, Block 1,
57 Ting kok Road, Tai Po, Hong Kong.

Importer: VTech Electronics Europe plc
Napier Court, Abingdon Science Park, Abingdon,
Oxon, OX14 3YT, U.K.

Credits:

The Background Noise sound file was created by Caroline Ford, and is used under the Creative Commons license.

The Stream Noise sound file was created by Caroline Ford, and is used under the Creative Commons license.

The Crickets At Night sound file was created by Mike Koenig, and is used under the Creative Commons license.

The Heart Beat sound file was created by Zarabadeu, and is used under the Creative Commons license.

Disposal of batteries and product



The crossed-out wheelee bin symbols on products and batteries, or on their respective packaging, indicates they must not be disposed of in domestic waste as they contain substances that can be damaging to the environment and human health.



The chemical symbols Hg, Cd or Pb, where marked, indicate that the battery contains more than the specified value of mercury (Hg), cadmium (Cd) or lead (Pb) set out in Battery Directive (2006/66/EC).

The solid bar indicates that the product was placed on the market after 13th August, 2005.

Help protect the environment by disposing of your product or batteries responsibly.

Declaration of conformity

This product is intended for use within Europe and UK.

This equipment complies with the essential requirements to EU's Radio Equipment Directive (2014/53/EU) and the UK's Radio Regulations 2017 on radio systems and telecommunication equipment.

VTech Telecommunications Ltd. hereby declares that this Audio Monitor DM1111 is in compliance with the essential requirements and other relevant provisions of EU's Radio Equipment Directive (2014/53/EU) and UK's Radio Equipment Regulations 2017.

The Declaration of Conformity for the DM1111 is available from www.vtechbabycare.com.



Specifications are subject to change without notice.
© 2021 VTech Telecommunications Ltd.
All rights reserved. 02/21. DM1111_UK_CIB_V5

